

# FOR LEASE AT 130 SPADINA AVE.

## DETAILS

Availability: Suite 708

Size: 1,153 sq ft

Rent: Contact us

Term: 3 – 5 years

## HIGHLIGHTS

Corner suite

Bright suite with 3 offices

Hardwood floors

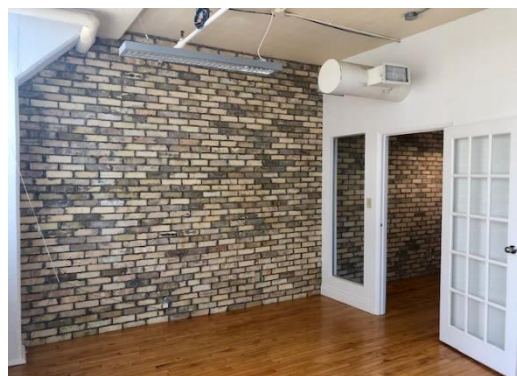
Large operable windows

Beautiful historic property

LRT at the doorstep

Great downtown location

Newly constructed rooftop terrace with wifi– [VIEW HERE](#)



**WTF**group  
COMMERCIAL REAL ESTATE DEVELOPMENT

Honor Sewell  
401-119 Spadina Avenue, Toronto, ON, M5V 2L1  
P: 416.593.6420 | F: 416.593.6375 | [www.wtfgroup.com](http://www.wtfgroup.com)