

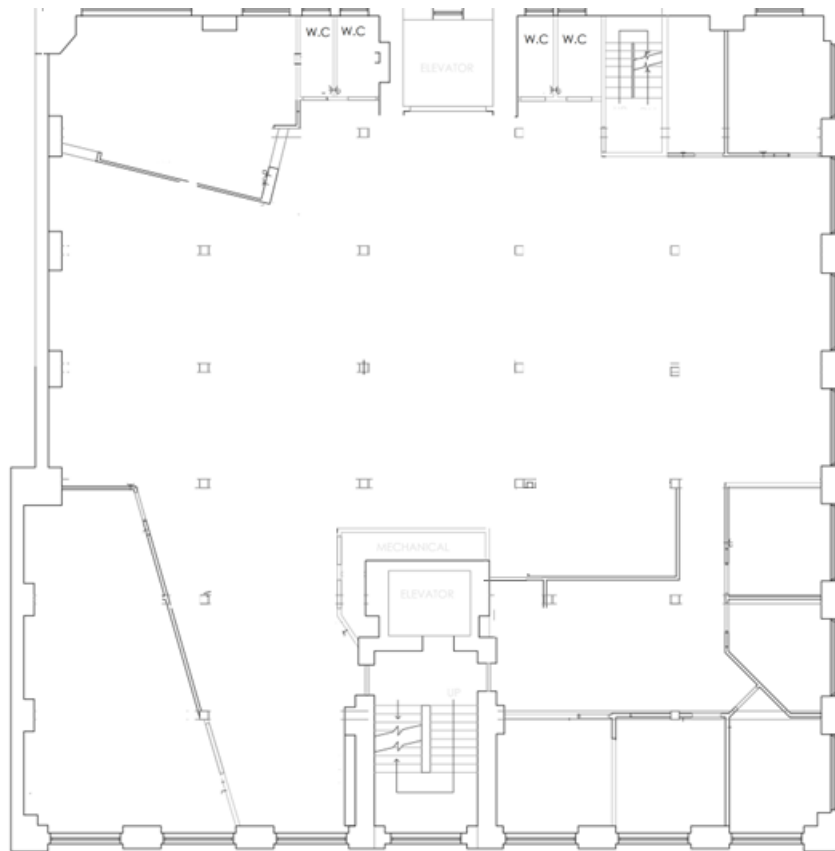
## Suite #100 – 7,411 SQ.FT.

### RENTAL INFORMATION

Contact us

### SUITE DESCRIPTION

Full floor plate! Mainly open plan includes 6 offices, boardroom and large kitchenette. Beautiful character space with hardwood throughout. Large, operable windows providing ample natural light. En suite washrooms. Direct Freight access.



All rates subject to change without notice.