



2020

COMING SOON

AT 26 SOHO STREET

A rare opportunity to lease in this sought-after historic property.

AVAILABLE ON APRIL 1ST, 2026



www.wtfgroup.com

26 Soho Street

POST & BEAM SUITES. UP TO 7,083 SQ FT

Opportunities in this building are seldom offered, making this an exceptional chance for tenants seeking distinctive character space in a prime location.





Up to 7,083 sq ft available **Aprilst, 2026**

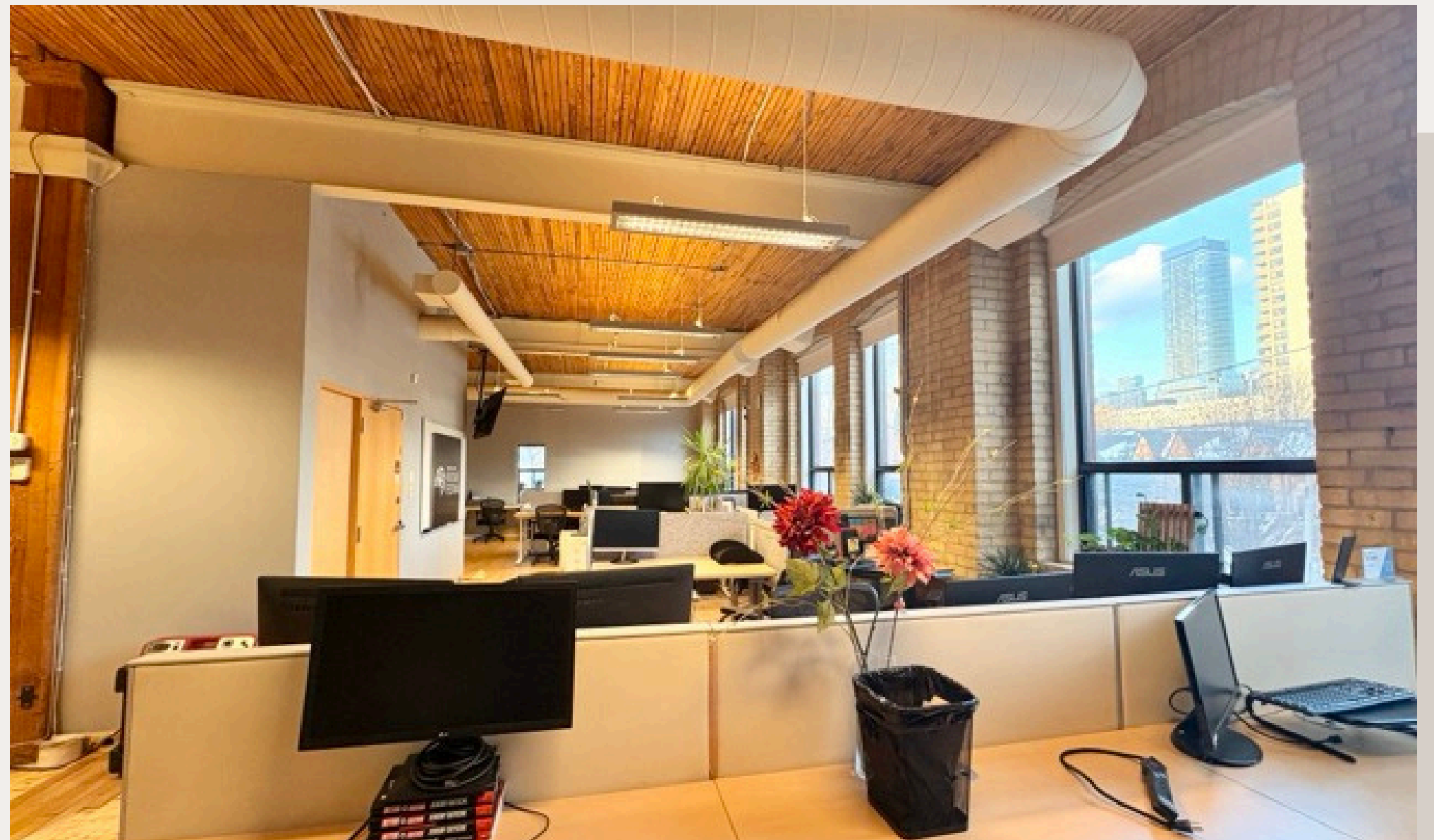
Suite 200 4,307 sq ft Expansive windows over looking Soho Street

Suite 201 1,599 sq ft Three meeting rooms and kitchenette

Suite 205 1,177 sq ft Sunlit open plan

Call for rates and details.

SPACE WITH
CHARACTER

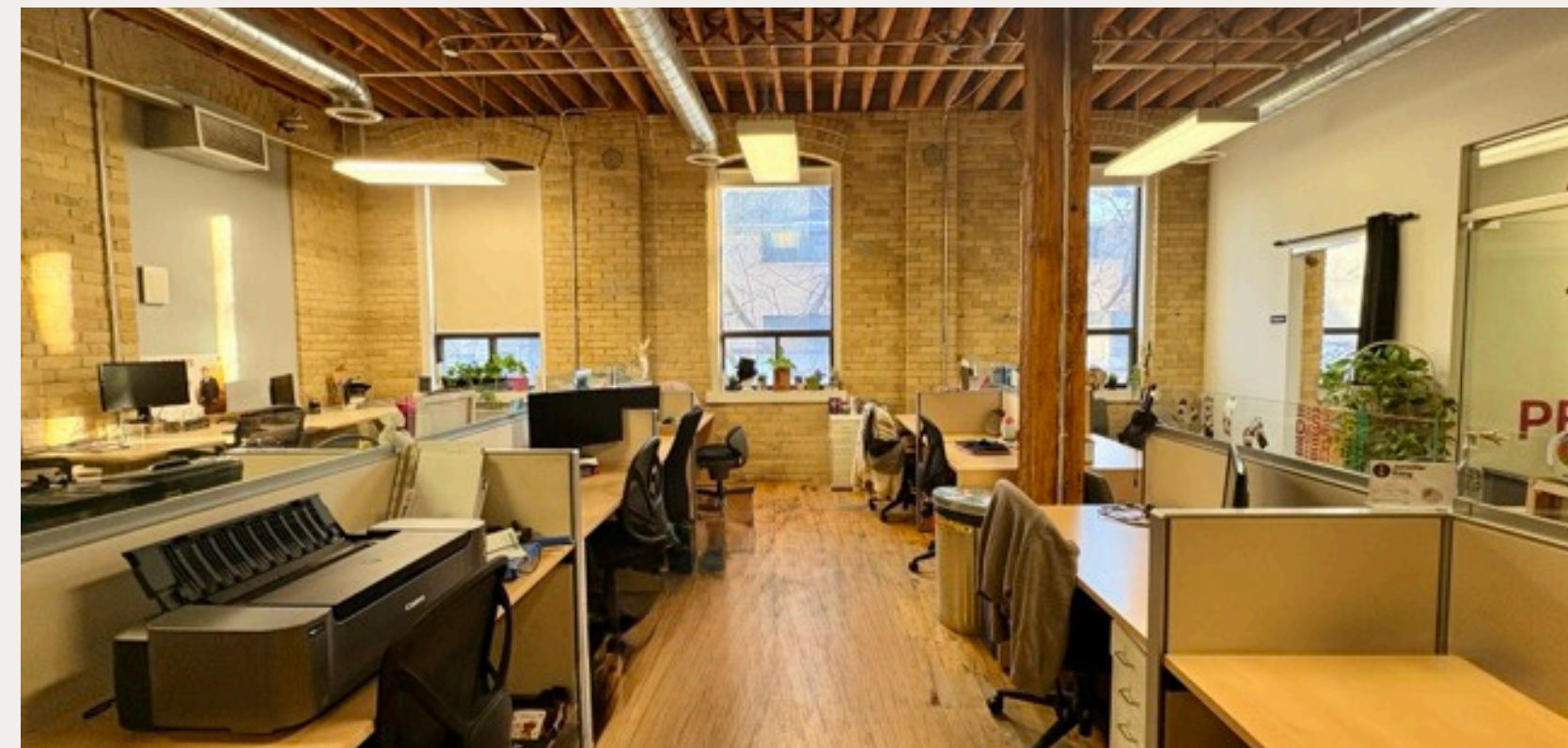




RARE AVAILABILITY

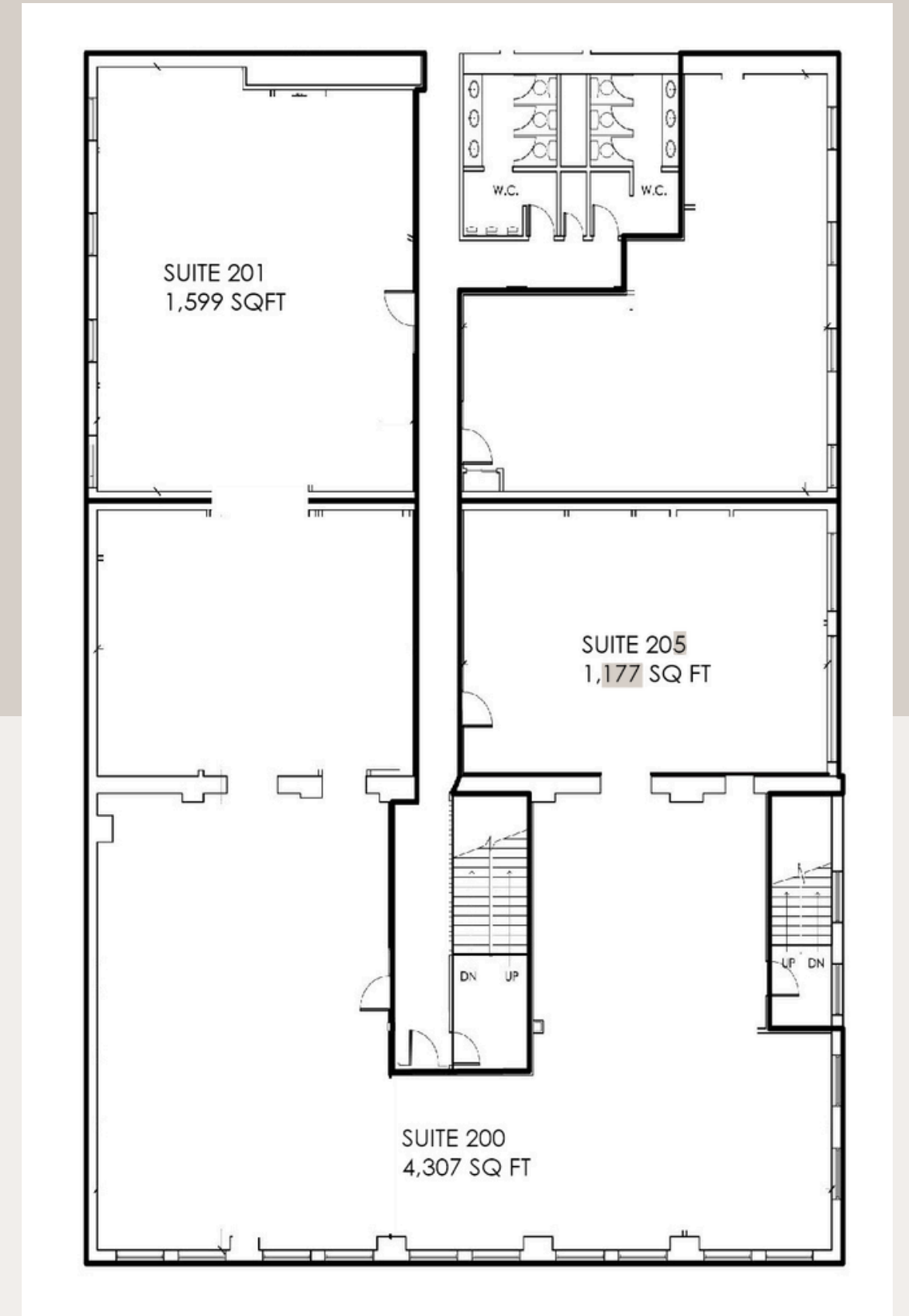
Suites feature character rich architecture, efficient layouts, and flexible configurations suitable for professional office, creative, or boutique uses.

26 Soho Street



OPEN AIR SPACES

All tenants enjoy shared access to the building's stunning roof top patio.



26 Soho Street



SPRING 2026 OCCUPANCY

Contact us today for more information

Honor Sewell

hsewell@wtfgroup.com

416.593.6420 x 34



WTF g r o u p
COMMERCIAL REAL ESTATE DEVELOPMENT